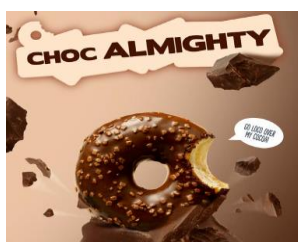




DONUTS



CHOC ALMIGHTY

Say hello to mister popular! This crowd favourite is coated with a lovely dark cocoa glaze and topped with little bits of real Belgian milk chocolate. Sink your teeth into his perfectly round shape and soft dough.

- **GOLDEN-FRIED DOUGH**
- **DARK COCOA GLAZING**
- **PIECES OF REAL BELGIAN MILK CHOCOLATE**

Product code: 2089
Unit size: 56g
Case barcode:
8590325509514
Case configuration: 48 x
56g
Shelf life: 540 Days



CRUSHED CANDY WHITE

Get started with this party animal! Dipped in white glaze and chocolate sweets for an unbeatable crunch.

- **GOLDEN-FRIED DOUGH**
- **SWEET WHITE GLAZING**
- **TOPPING OF CRISPY PIECES OF CHOCOLATE SWEETS**

Product code: 2111
Unit size: 56 g
Case barcode:
8590325509569
Case configuration: 48 x
56g
Shelf life: 540 Days



NUTZILLA

Whether you go loco over his milk cocoa coating, satisfying hazelnut crunch or the choco-loads of hazelnut cream inside, this bad boy is here

to wow you with bold taste and big looks.

- **HAZELNUT CREAM**
- **MILK COCOA GLAZING**
- **HAZELNUT CRUNCH**

Product code: 2099

Unit size: 48 g

Case barcode:
8590325509842

Case configuration: 48 x
71g

Shelf life: 540 Days



PINKIE

So fluffy every bite is like floating on a cloud. With its pretty in pink glazing, rainbow sugar crystals and a super soft mix of marshmallow cubes, this sweetie will make you look through rose-coloured glasses.

- **STRAWBERRY STYLE GLAZE**
- **MARSHMALLOW CUBE MIX**

Product code: 2112

Unit size: 58 g

Case barcode:
8590325509712

Case configuration: 48 x
58g

Shelf life: 540 Days



QUEEN V

She's as sassy as she is sweet. This royal is ruler of all things vanilla thanks to her soft vanilla-style cream, a blanket of dark choco-style glaze and yellow stripes for extra fancy looks.

- **GOLDEN-FRIED DOUGH**
- **DARK CHOCO-STYLE GLAZE**
- **VANILLA-STYLE CUSTARD FILLING**

Product code: 2102

Unit size: 48 g

Case barcode:
8590325509828

Case configuration: 48 x
71g

Shelf life: 540 Days



RUFFALLO CREAM

The cocodonut that cracks everybody up! White glaze coated with snow-white stripes, sprinkled with sweet coconut shavings and filled to the brim with a fresh Raffaello™-style cream.

- **WHITE CHOCOLATE GLAZE**
- **RAFFAELLO™-STYLE CREAM FILLING**
- **COCONUT SHAVINGS**

Product code: 2101
Unit size: 48 g
Case barcode: 8590325509934
Case configuration: 48 x 74g
Shelf life: 540 Days



STRAWJELLY JAM

You adore real white chocolate. And love real strawberries?

This chocolatey flavour bomb with strawberry pieces is right up your alley! Discover its super sweet strawberry jam filling yourself.

- **REAL WHITE CHOCOLATE GLAZING**
- **STRAWBERRY JAM FILLING**
- **FREEZE-DRIED STRAWBERRY PIECES**

Product code: 2100
Unit size: 48 g
Case barcode: 8590325509965
Case configuration: 48 x 73g
Shelf life: 540 Days

HOLY CHOC

Donut Chocolate Filling & Cocoa Flakes

So choc-o-lotta chocolate it even makes chocoholics go OH MY GOD! Think dark choco glazing, deliciously rich choco filling and triple coloured choco flakes for an explosive finish.

Product code: 2113
Unit size: 48 g
Case barcode: 8590325509811
Case configuration: 48 x 71g
Shelf life: 540 Days



FUNFETTI

Wonder what a rainbow party in your mouth tastes like? Well, lucky you: this strawberry-coated sweet treat is sprinkled with white vermicelli and boasts a heavenly light yet chunky bite!

Product code: 2097
Unit size: 56 g
Case barcode:
8590325509507
Case configuration: 48 x
56g
Shelf life: 540 Days

CROISSANTS



Pain Au Chokolat - Chocolate Roll with Butter

Product code: 2093
Unit size: 75 g
Case barcode:
5412632515916
Case configuration: 70 x
75g
Shelf life: 365 Days



Curved Croissant

Product code: 2092
Unit size: 100 g
Case barcode:
5412632512113
Case configuration: 36 x
100g
Shelf life: 365 Days



Butter croissant. Quick frozen, ready to bake.

Product code: 2090
Unit size: 65 g
Case barcode:
5410683041170
Case configuration: 80 x
65g
Shelf life: 365 Days



Multicereal croissant.

Product code: 2094
Unit size: 80 g
Case barcode:
8590325016432
Case configuration: 80 x
80g
Shelf life: 365 Days



Apricot filled Croissant - **VEGAN**. Quick Frozen, ready to bake.

Product code: 2095
Unit size: 95 g
Case barcode:
8590325061234
Case configuration: 60 x
95g
Shelf life: 365 Days



Strawberry filled Croissant - **VEGAN**. Quick Frozen, ready to bake.

Product code: 2096
Unit size: 95 g
Case barcode:
8590325061227
Case configuration: 60 x
95g
Shelf life: 365 Days



Butter Croissant with **Almond** Filling.

Product code: 2154
Unit size: 100 g
Case barcode:
5412632516487
Case configuration: 60 x
100g
Shelf life: 365 Days



Chocotwist Chocolate Belgium
Croissant

Product code: 2156
Unit size: 120 g
Case barcode:
5410683241600
Case configuration: 52 x
120g
Shelf life: 365 Days

BAGUETTES & BREADS



Demi-Baguette

Product code: 2110
Unit size: 125 g
Case barcode:
5410683143621
Case configuration: 45 x
125g
Shelf life: 365 Days



Garlic Baguette

Product code: 2107
Unit size: 170 g
Case barcode:
5410683144338
Case configuration: 48 x
170g
Shelf life: 365 Days



Batard Campagne

Product code: 2103
Unit size: 450 g
Case barcode:
5410683141856
Case configuration: 14 x
450g
Shelf life: 365 Days



Buche 5 Seeds

Product code: 2104
Unit size: 450 g
Case barcode:
5410683141863
Case configuration: 14 x
450 g
Shelf life: 365 Days



Farmers Bread

Product code: 2105
Unit size: 600 g
Case barcode:
5412632512823
Case configuration: 12 x
600g
Shelf life: 365 Days



Bocata

Product code: 2106
Unit size: 140 g
Case barcode:
5410683143706
Case configuration: 40 x
140g
Shelf life: 365 Days

FROZEN & READY TO BAKE



Apple Turnover

Product code: 2157
Unit size: 115 g
Case barcode:
5410683543254
Case configuration: 90 x
115g
Shelf life: 365 days



Eclair

Product code: 2158
Unit size: 105 g
Case barcode:
5410683145106
Case configuration: 20 x
105g
Shelf life: 180 Days



Mini Danish Mix

Product code: 2160
Unit size: 40 g
Case barcode:
5412632509298
Case configuration: 110 x
40g
Shelf life: 450 Days



Jam Pastry Sheet

Product code: 2161
Unit size: 1650 g
Case barcode:
5410683051087
Case configuration: 10 x
1650g
Shelf life: 365 Days
